

KATYBAR[®] DOOR VAULT

INDUSTRIAL LOCK SYSTEM

MUST BE DONE FIRST

UNPACKING INSTRUCTIONS

The Handle is locked during shipping.

There are two internal shipping screws to protect rack and pinion during shipping.
These shipping screws must be removed to operate handle to move right and left.



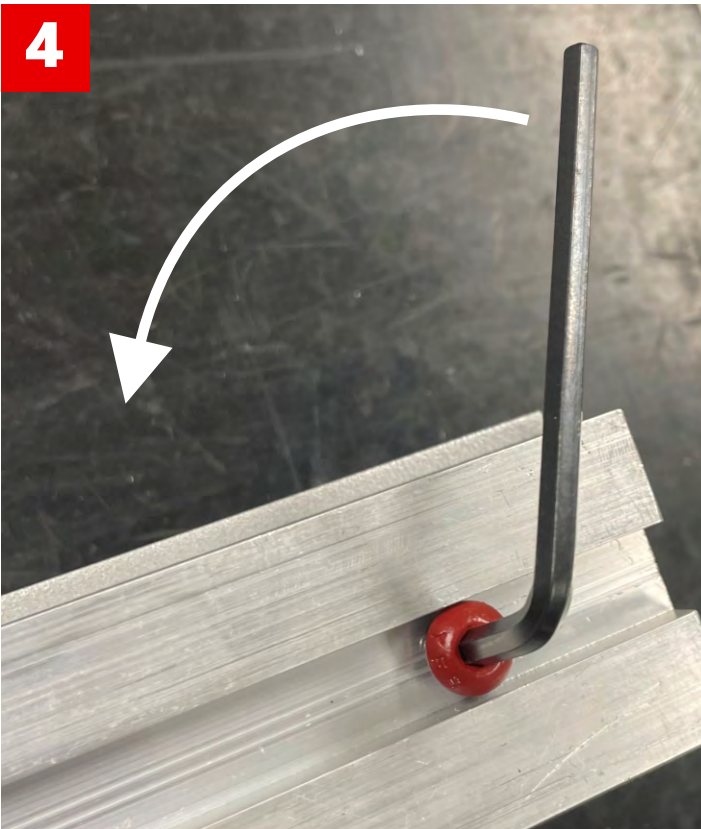
1
Remove all screws right and left on both sides of Katy Bar.



2
Using screwdriver, pry upward to separate the Katy Bar from the door rail.



3
Locate the two red shipping screws on each end of Katy Bar in bottom rail.



4
Use provided wrench to remove the shipping screws and discard.

The handle should move freely now and bolts should extend evenly and smoothly with control of handle moving right and left.

You are now ready to begin installation on door.

If there is any resistance while moving handle right or left, or if bolts are not moving outward and inward... please **DO NOT continue with installation and contact us.**

KATYBAR® DOOR VAULT

INDUSTRIAL LOCK SYSTEM

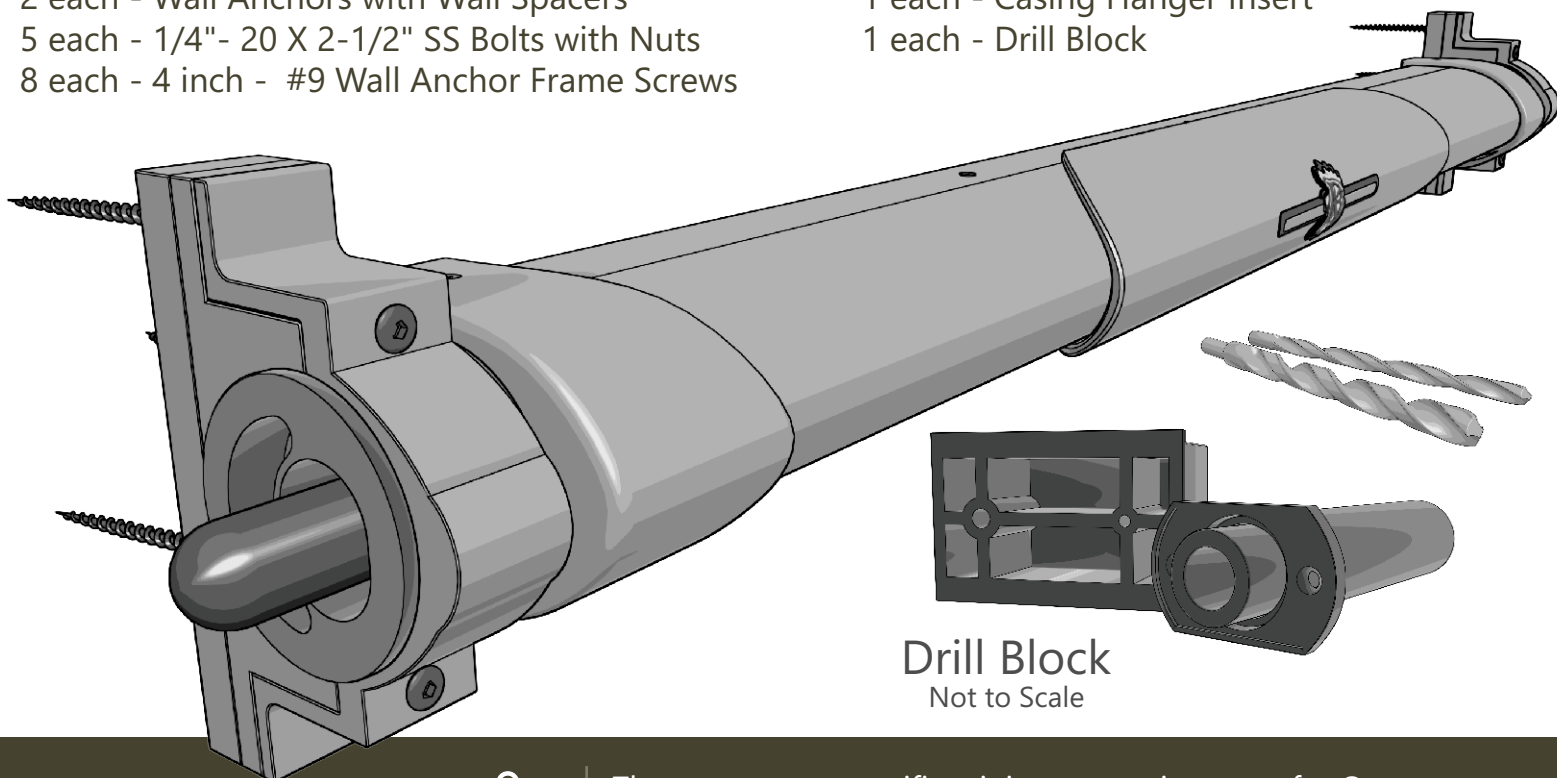
BEFORE INSTALLATION CHECK LIST

- 1 Make sure you have all components in Parts List before installation.
- 2 Make sure your Katy Bar® functions properly by pushing button and sliding handle to engage lock bolts outward and then push button and slide handle to disengage lock bolts inward before installation. While in locked position, hold up and against door at desired installation area to be certain lock bolts freely clear door trim.
- 3 Make sure your door meets the Door Requirements before installation.
- 4 Make sure that Wall Anchors screws are **NOT to be OVERTIGHTENED**. If screws are over tightened on wall anchor, you will crush wall board and completely alter alignment of lock bolts to wall anchors. Alignment of Wall Anchors and lock bolts are totally dependent on Wall Anchor mounted snug but without crushing wall board inward.

PARTS LIST

1 each - Katy Bar® Door Vault with End Caps
1 each - Outer Door Rail with End Caps
1 each - Outer Rail Door Seal
2 each - Wall Anchors with Wall Spacers
5 each - 1/4" - 20 X 2-1/2" SS Bolts with Nuts
8 each - 4 inch - #9 Wall Anchor Frame Screws

1 each - 5/32 Drill Bit
1 each - 1/4 inch Drill Bit
1 each - Casing Hanger
1 each - Casing Hanger Insert
1 each - Drill Block



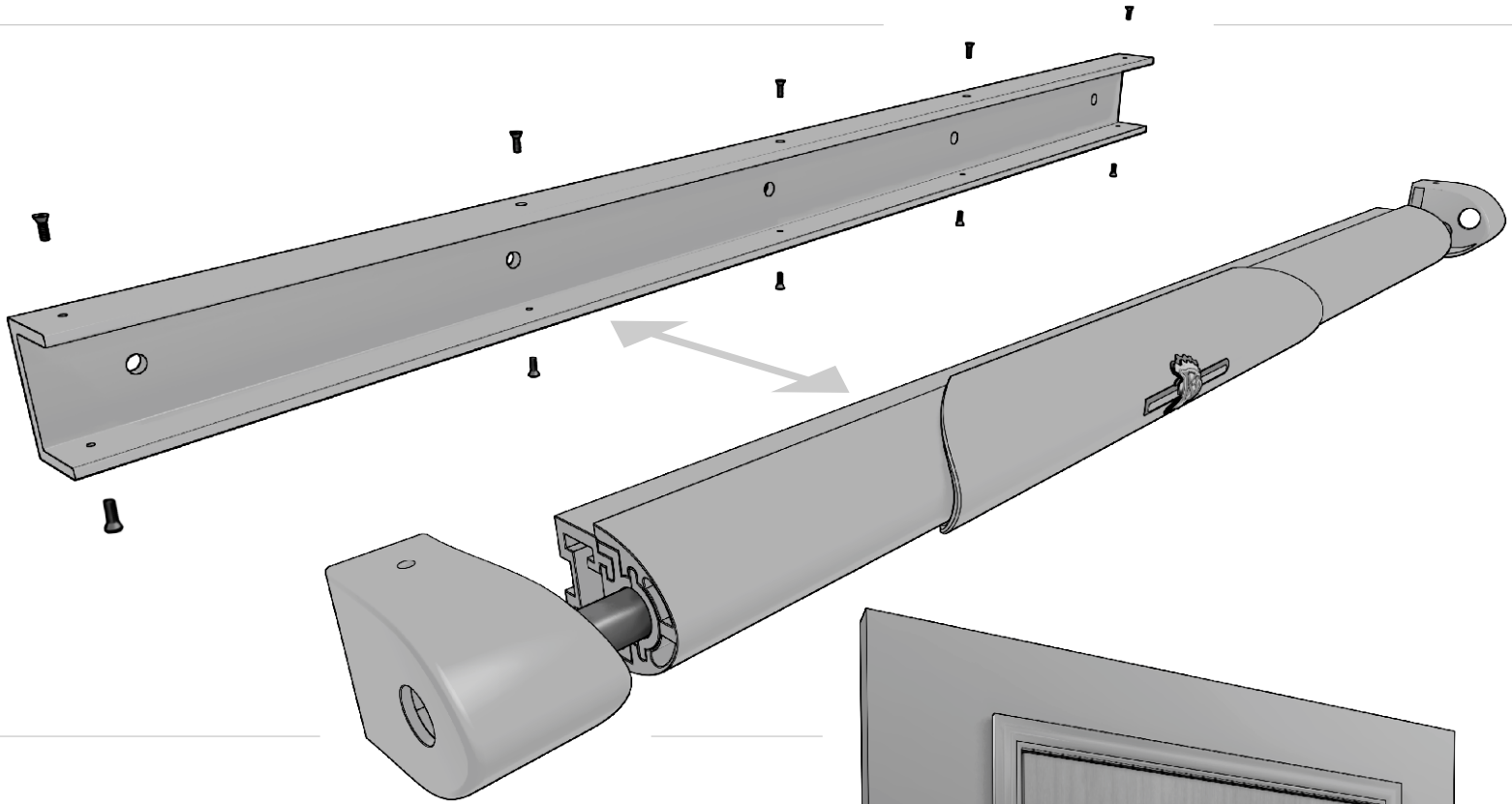
ATTENTION
**OUT-SWINGING
DOOR INSTALLATION**



There are some specific minimum requirements for Out-Swinging Doors. See the **OUT-SWINGING DOOR REQUIREMENTS** section for details. Out-Swinging Installation goes inside the door frame, **Wall Anchors Are Not Required**.

KATYBAR/DOOR PREP

- 1** Remove all screws (10) on Katy Bar® Vault and remove End Caps and set aside.
- 2** Separate Katy Bar® Vault from Door Rail by pulling Katy Bar® up from Door Rail.

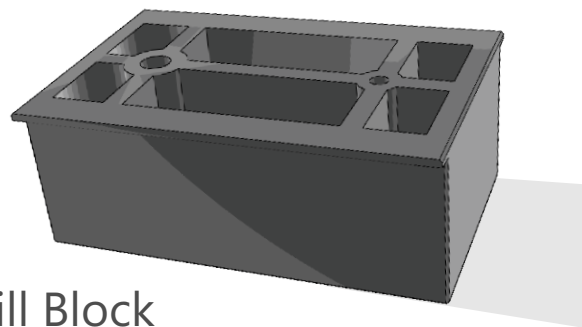


- 3** Determine area of door for Katy Bar® Vault location. Area on door should be; below door knob, smooth all the way across, at least two inches down and away from door knob AND hinge, and more than 33 inches from floor.
- 4** Measure width of door and mark the exact center.
- 5** Use a punch to create indent of mark at exact center.



DOOR 1ST HOLE / CENTERING

- 1 Install provided 5/32" drill bit into drill and drill through 5/32" hole in provided Drill Block.
- 2 Align 5/32" drill bit through Drill Block with indent at center of door.



*Drill Block

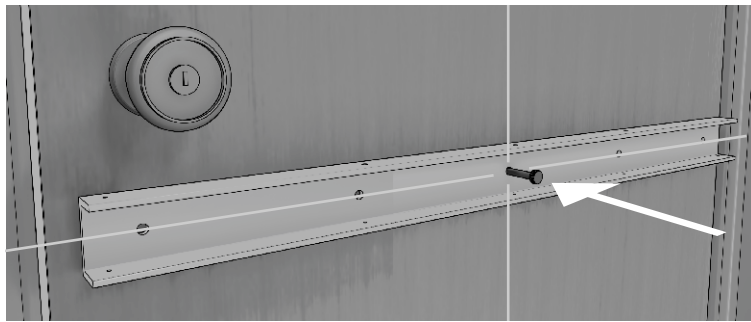
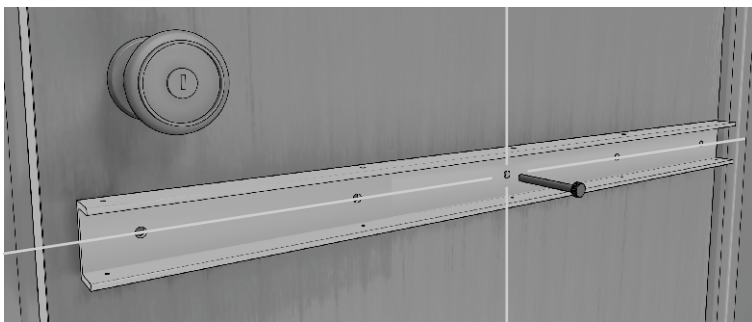
Used to help center 5/32" then 1/4" wider hole

- 3 Drill Block MUST be flat and firmly pressed against door at all time to ensure straight drilling through door.
- 4 While holding Drill and Drill Block in flat position, drill 5/32" hole through door
- 5 Attach provided 1/4 " drill bit into drill and drill through 1/4" hole of Drill Block.
- 6 While holding Drill and Drill Block in flat position, drill 1/4" hole through 5/32" hole in door.

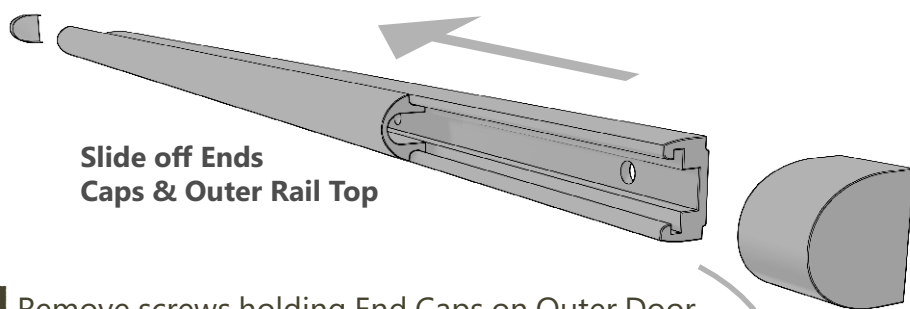


RAIL PLACEMENT/LEVELING

- 1 Place one 1/4"-20 SS bolt through Center hole of Door Rail and door.

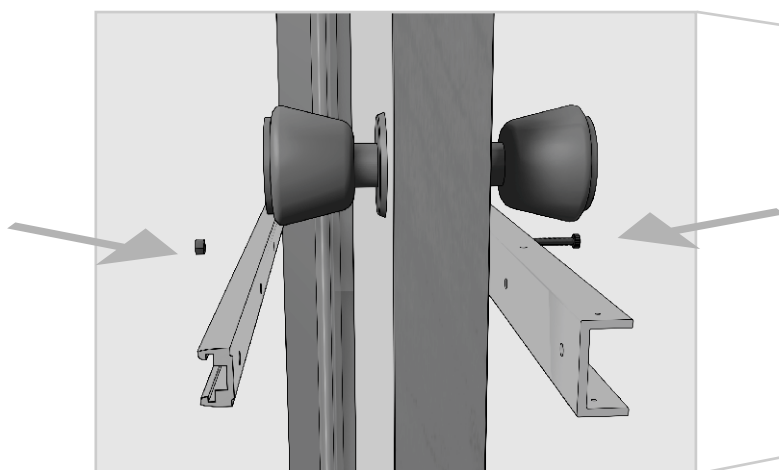


- 2 Position bolt at center hole through Outer Door Rail Seal with flat portion of seal toward door. Open door midway to make installation easier.



- 3 Remove screws holding End Caps on Outer Door Rail. Remove End Caps and set aside.

- 4 Carefully slide Top of Outer Door Rail from its Base, and set Top aside.

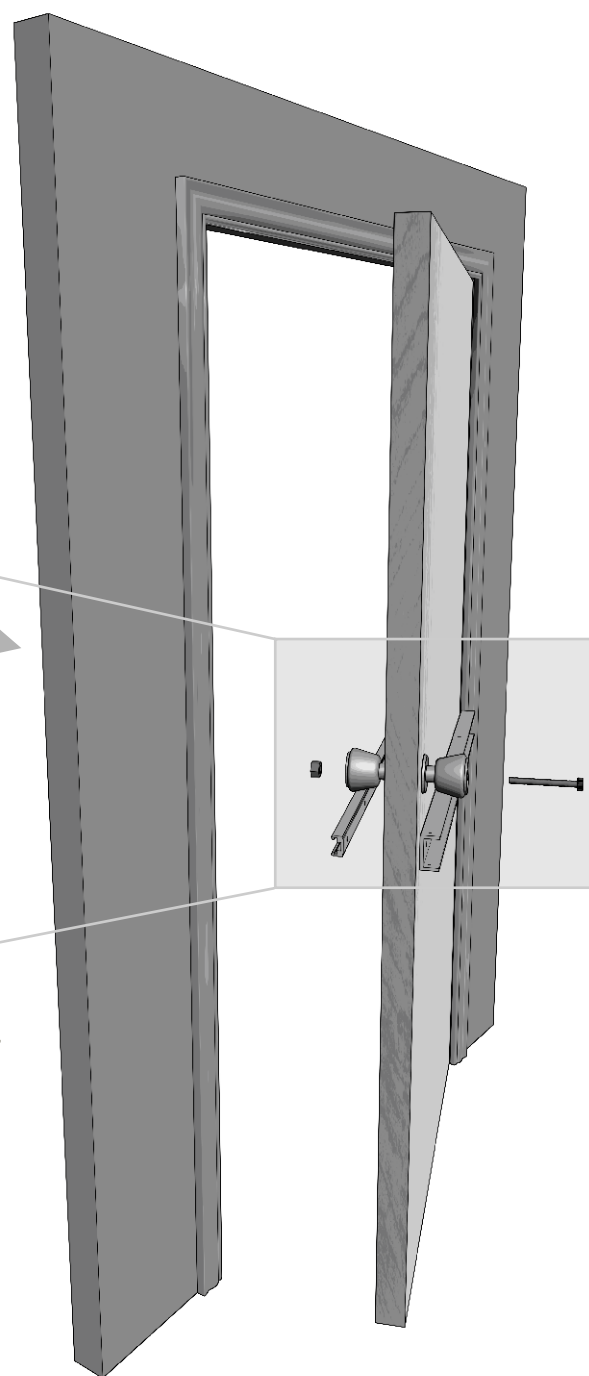


- 5 Position bolt through door at center hole through Outer Door Rail Base with flat side toward door.

- 6 Attach provided 1/4" SS nut onto bolt and screw bolt just till nut sets into nut groove of Outer Door Rail Base.

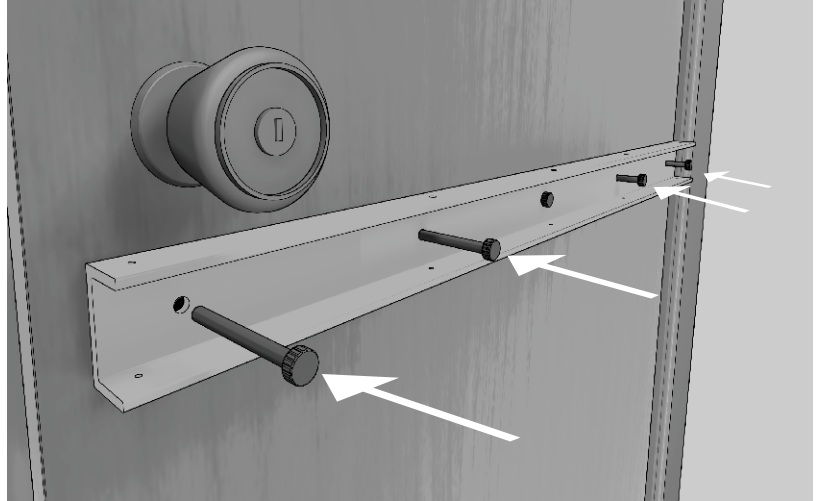
- 7 Place a level on top of inner Door Rail on inside of door and position Door Rail until completely level.

- 8 Mark door at nearest to you Door Rail hole while Door Rail is exactly level. Use a punch to create indent of mark at nearest Door Rail hole.

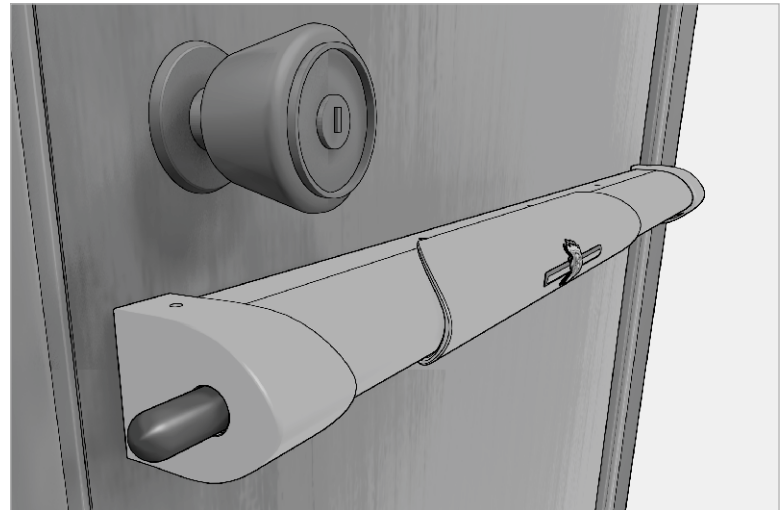
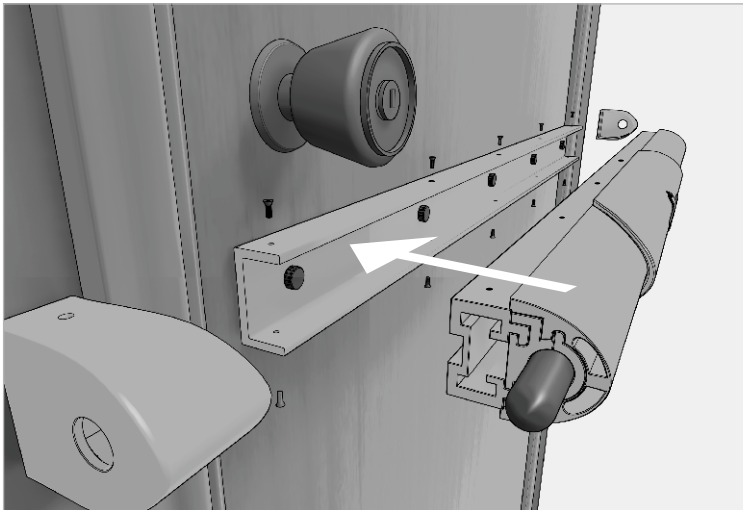


RAIL PLACEMENT (CONTINUED)

- 1 Re-Install 5/32" provided drill bit into drill, and drill through 5/32" hole in provided Drill Block.
- 2 Position Drill Block INTO Door Rail with 5/32" drill bit aligned with indent.
- 3 Drill Block MUST be flat & firmly pressed into Door Rail to ensure straight drilling through door.
- 4 While holding Drill & Drill Block into Door Rail in flat position, drill 5/32" hole through door.
- 5 Attach provided 1/4" drill bit into drill and drill through 1/4" hole of Drill Block.
- 6 While holding Drill and Drill Block into Door Rail in flat position, drill 1/4" hole through 5/32" hole in door.
- 7 Place one 1/4"-20 SS bolt through nearest hole in Door Rail and through just drilled hole in door, Outer Door Rail Seal, and Outer Door Rail Base.
- 8 Attach provided 1/4" SS nut onto bolt and screw bolt till nut sets into nut groove in rail. Screw both 1/4" bolts till inner and outer rails are snug against door.
- 9 Find center of each remaining holes in Door Rail, mark and punch to create indent. Repeat the process of 5/32", then 1/4" hole with Drill Block for the remaining holes checking level and hand snug 1/4"-20 SS bolt & nut as each hole is completed.



FINAL ASSEMBLY



- 1 With inner and outer rails attached firmly to door, slide Outer Top Rail into Outer Base Rail. Attach Outer End Caps and screws.
- 2 Close door and determine if you want Lock Button of Katy Bar® Vault on the top or bottom of the lock, and place accordingly
- 3 Replace End Caps and all screws (10) to secure Katy Bar® Vault to Door Rail.

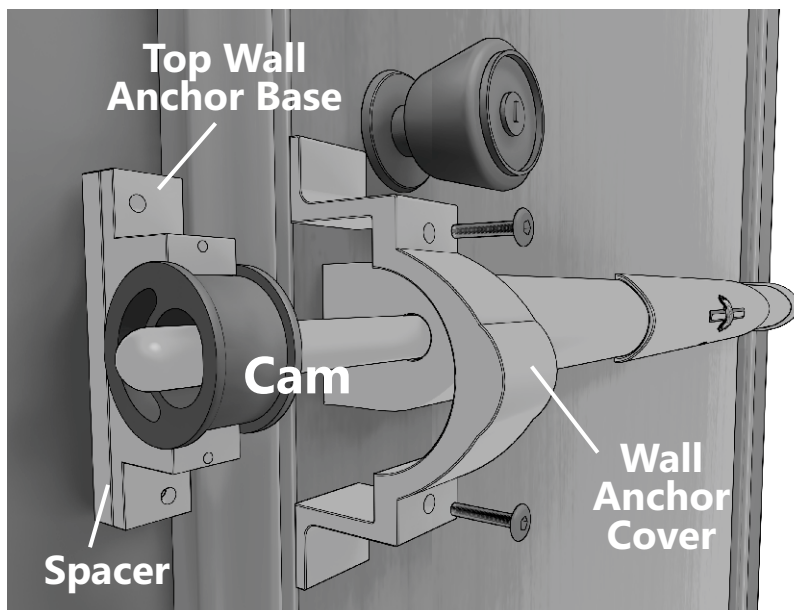


ATTENTION

OUT-SWINGING DOOR

Out-Swinging Installation goes inside the door frame, **Wall Anchors Are Not Required.** See OUT-SWINGING REQUIREMENTS SECTION

- 1 Remove screws holding Top Cover of Wall Anchor. Set Top Cover and screws aside. Install provided 5/32" drill bit into drill. (**NOTE: Be certain it is 5/32" and NOT 1/4" bit**) Push Lock Button and slide handle till lock bolts are freely out and over trim and Lock Button in fully locked position.
- 2 With Wall Anchor Spacer, Base and Cam in hand, align flat against edge of door trim and Lock Bolt. See diagram. (**NOTE: Spacer may or may not be needed**)
- 3 Turn Cam till Lock Bolt is nearly touching the inner edge of oval in Cam.
- 4 Space in Cam above and below Lock Bolt is equal in distance.
- 5 Make certain and check again; edge of Spacer (**if needed**) and Base are flat against edge of door trim, Cam is rotated such that Lock Bolt is nearly touching inner edge of oval in Cam, space in Cam above and below Lock Bolt is equal in distance. This is the optimal position for Wall Anchor.
- 6 Hold this alignment in place.



Top Wall Anchor | 1st Drilled Hole

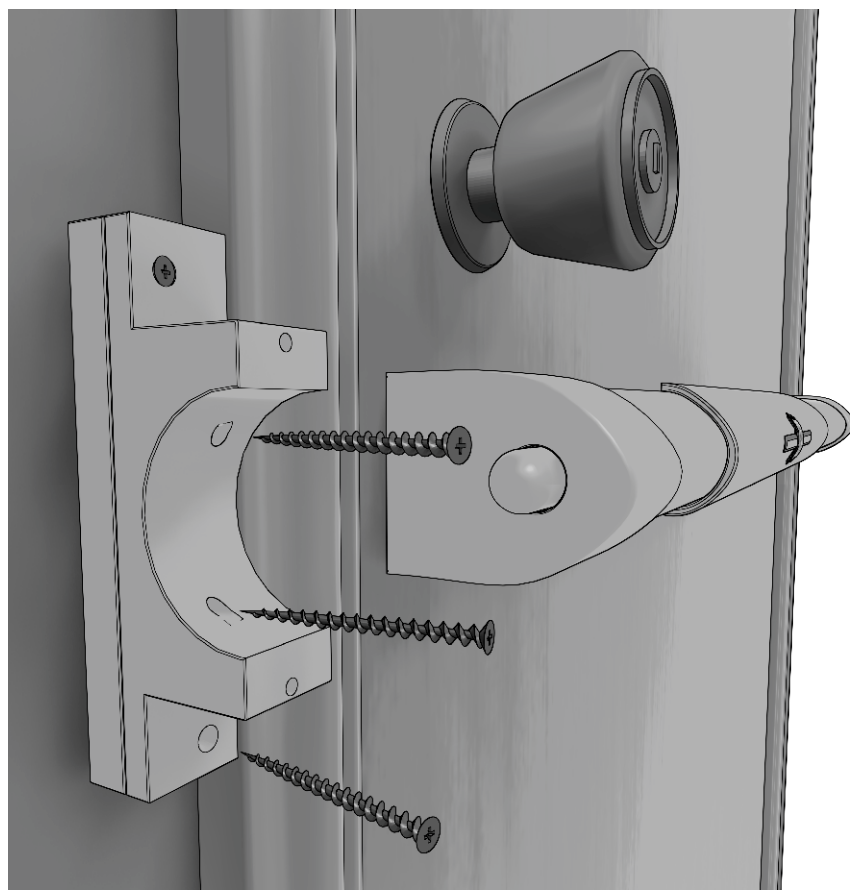
WARNING: DO NOT OVERTIGHTEN WALL ANCHOR FRAMING SCREWS & CRUSH WALLBOARD

- 1 Place 5/32" Drill Bit in Top Wall Anchor Base Screw Hole.
- 2 Align Screw such that the Screw Hole and the Threaded Hole are in alignment. This angle produced will allow framing screws to alternate into king stud and jack stud.
- 3 Carefully drill pilot hole 4 inches into frame.
- 4 Change 5/32" drill bit for a Phillips head drive.
- 5 Screw one of the #9 - Wall Anchor Framing Screws in most of the way. **TAKE CARE DRILL DOES NOT OVERTIGHTEN SCREW**
- 6 Replace Phillips Drive with 5/32" Drill Bit in Drill.
- 7 Push Lock Button and Slide Handle on Katy Bar® Vault to disengage Lock Bolt from Wall Anchor and remove Cam to reveal remaining Wall Anchor Screw Holes.
- 8 Hold Wall Anchor and Spacer (if needed) against door trim and drill pilot hole for remaining holes aligning each framing screw with threaded wall anchor hole.
- 9 With Wall Anchor Framing Screws set most of way, use ratchet wrench and Phillips drive to pull Wall Anchor snugly to wall without crushing wall board.



WARNING: DO NOT OVERTIGHTEN WALL ANCHOR FRAMING SCREWS & CRUSH WALLBOARD

- 1** Push Lock Button and Slide Handle on Katy Bar® Vault to disengage Lock Bolt from Wall Anchor and remove Cam to reveal remaining Wall Anchor Screw Holes.
- 1** Hold Wall Anchor and Spacer (**if needed**) against door trim and drill pilot hole for remaining holes aligning each framing screw with threaded wall anchor hole.
- 2** With Wall Anchor Framing Screws set most of way, use ratchet wrench and Phillips drive to pull Wall Anchor snugly to wall without crushing wall board.
- 3** Push Lock Button and move Slide Handle to engage Lock Bolts through Wall Anchor and adjust Cam such that Lock Bolt is freely moving through Cam.
- 4** Attach Wall Anchor Top Cover and screws.
- 5** Tighten threaded machine screws tightly to Wall Anchor Base.
- 6** Repeat steps for Wall Anchor Installation on other side of door.



WARNING: DO NOT OVERTIGHTEN WALL ANCHOR FRAMING SCREWS & CRUSH WALLBOARD



OUT-SWINGING DOOR

The Door Vault System Installs Inside the Door Frame, Wall Anchors Are Not Required

Must Be
Greater Than
34.75"

- 1** The distance between the narrowest points measuring horizontally of the door frame must be less than 34.75 inches.
- 2** For Out-Swinging Installations without door frame protrusions and horizontal width of door frame is greater than 34.75", installation is straightforward.

Door Face

1 11/16"

- 3** The distance from face of door to the center of lock bolt is 1 11/16 inches. Doorframe is smooth on both sides and will not interfere with lock bolt installation through frame.

Some Doors have a Backstop Moulded Into the Frame

- 4 However, some door ways have a backstop moulded into the frame. The arrow indicates position of where the lock bolt would need to be installed. This may interfere with lock bolt installation. To be certain you will not have issues, you will need a door rail spacer to move lock bolt away from moulding of backstop in the frame.
- 5 With door rail spacer in place, the center of lock pin is now located at $2 \frac{1}{16}$ inches and doorframe backstop will not interfere with completion of installation.



ATTENTION

OUT-SWINGING DOOR

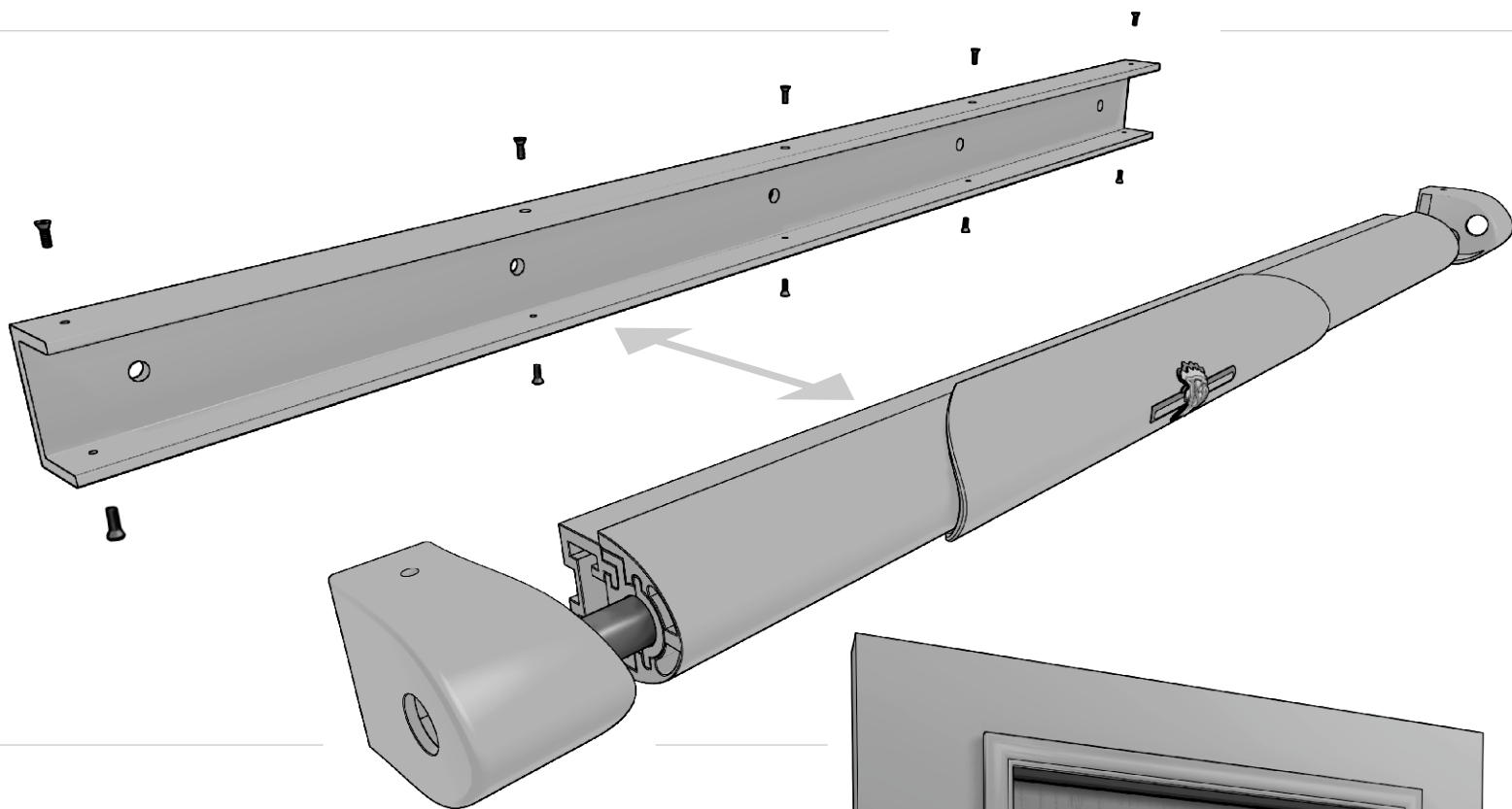
There are some specific minimum requirements for Out-Swinging Doors.

See the **OUT-SWINGING DOOR REQUIREMENTS** section for details.

Out-Swinging Installation goes inside the Door Frame, **Wall Anchors Are Not Required**

KATYBAR/DOOR PREP

- 1 Remove all screws (10) on Katy Bar® Vault and remove End Caps and set aside.
- 2 Separate Katy Bar® Vault from Door Rail by pulling Katy Bar® up from Door Rail.

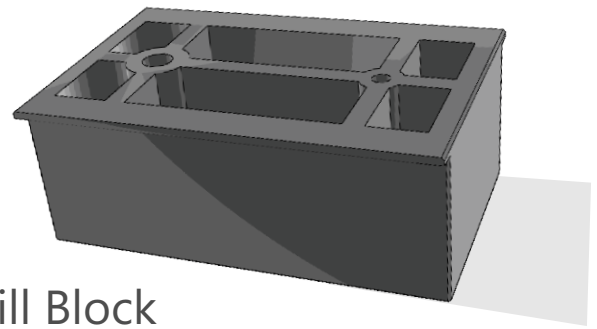


- 3 Determine area of door for Katy Bar® Vault location. Area on door should be; below door knob, smooth all the way across, at least two inches down and away from door knob AND hinge, and more than 33 inches from floor.
- 4 Measure width of door and mark the exact center.
- 5 Use a punch to create indent of mark at exact center.



DOOR 1ST HOLE / CENTERING

- 1** Install provided 5/32" drill bit into drill and drill through 5/32" hole in provided Drill Block.
- 2** Align 5/32" drill bit through Drill Block with indent at center of door.



*Drill Block

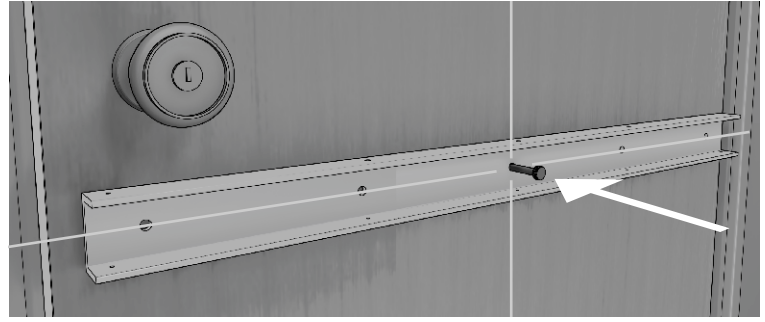
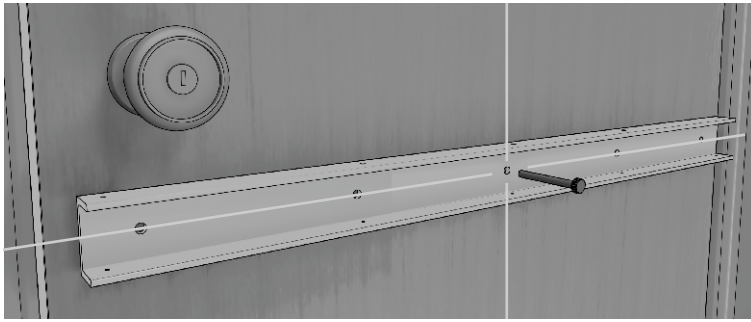
Used to help center 5/32" then 1/4" wider hole

- 3** Drill Block MUST be flat and firmly pressed against door at all time to ensure straight drilling through door.
- 4** While holding Drill and Drill Block in flat position, drill 5/32" hole through door
- 5** Attach provided 1/4 " drill bit into drill and drill through 1/4" hole of Drill Block.
- 6** While holding Drill and Drill Block in flat position, drill 1/4" hole through 5/32" hole in door.

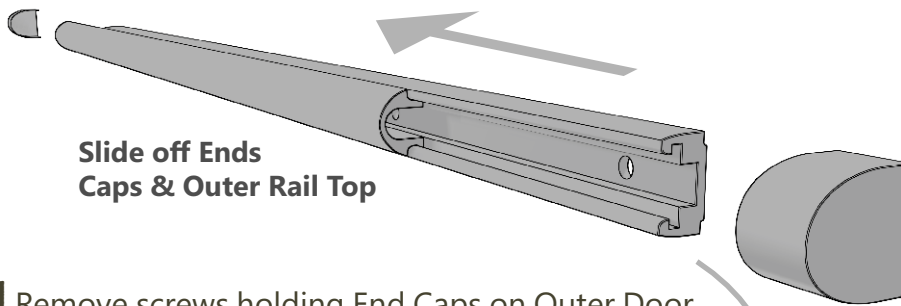


RAIL PLACEMENT/LEVELING

- 1 Place one 1/4"-20 SS bolt through Center hole of Door Rail and door.

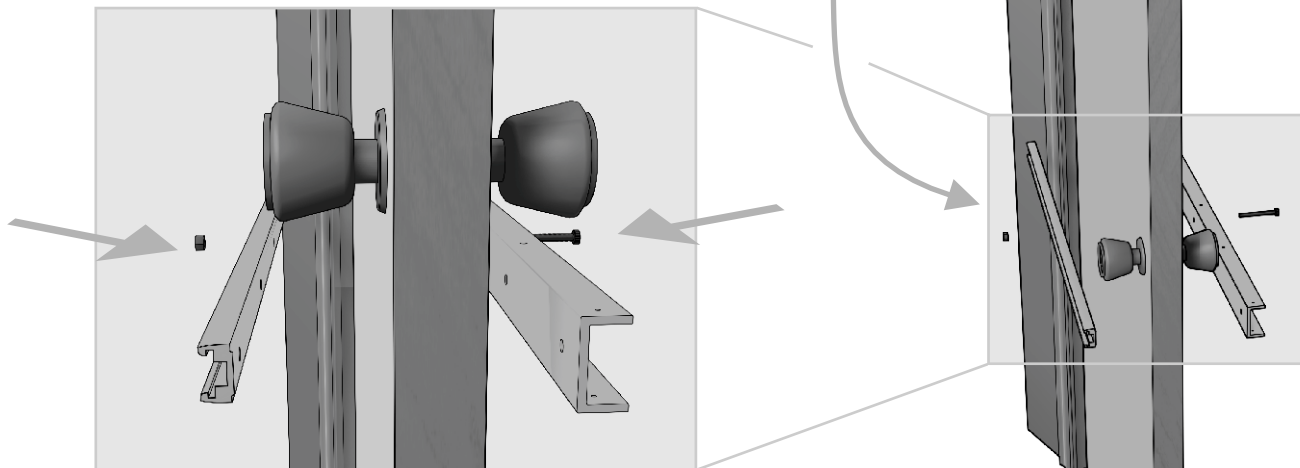


- 2 Position bolt at center hole through Outer Door Rail Seal with flat portion of seal toward door. Open door midway to make installation easier.



- 3 Remove screws holding End Caps on Outer Door Rail. Remove End Caps and set aside.

- 4 Carefully slide Top of Outer Door Rail from its Base, and set Top aside.



- 5 Position bolt through door at center hole through Outer Door Rail Base with flat side toward door.

- 6 Attach provided 1/4" SS nut onto bolt and screw bolt just till nut sets into nut groove of Outer Door Rail Base.

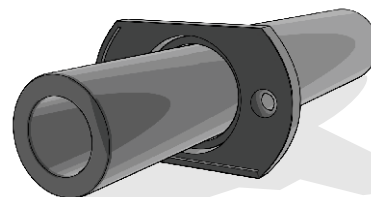
- 7 Place a level on top of inner Door Rail on inside of door and position Door Rail until completely level.

- 8 Mark door at nearest to you Door Rail hole while Door Rail is exactly level. Use a punch to create indent of mark at nearest Door Rail hole.

 It is critical to drill holes through casing straight & level in order for bolts to move freely into frame.


Drill Holes Through
the Door Casing Must Be
Straight & Level

Casing Hanger



Used to help **level & center** 3/8" then 5/8" wider hole into the Door Frame

- 1** Mark center position on frame by pressing button down on handle to slide the handle till bolts hit the frame. Using handle to "tap" frame with bolts and mark locations on frame.

+33"

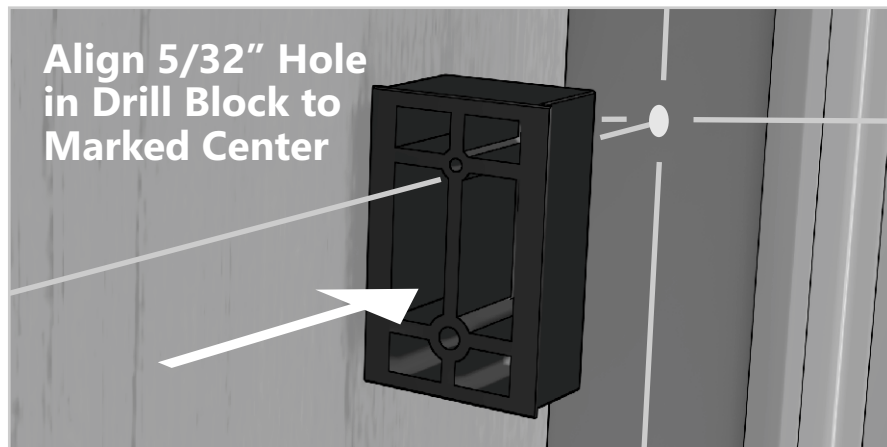
Door Face

1 11/16"

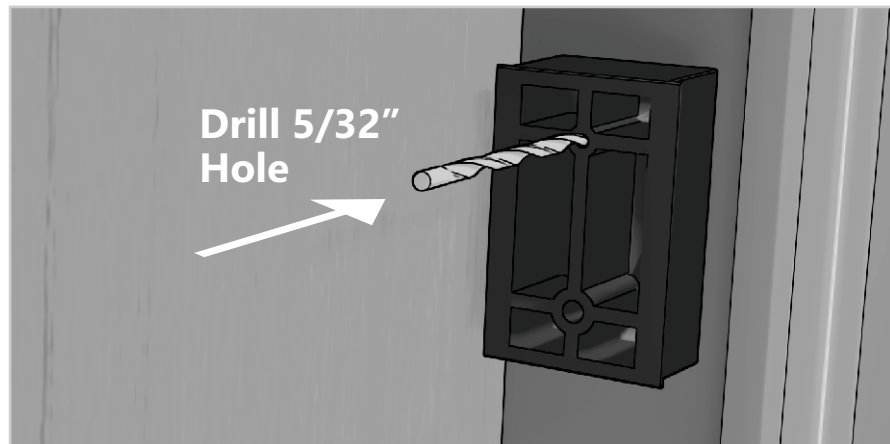
**Mark
Centers**
Mark Right and
Left Side

- 2** At the marked locations on frame, use the hammer and punch to create indent at exact center for drilling

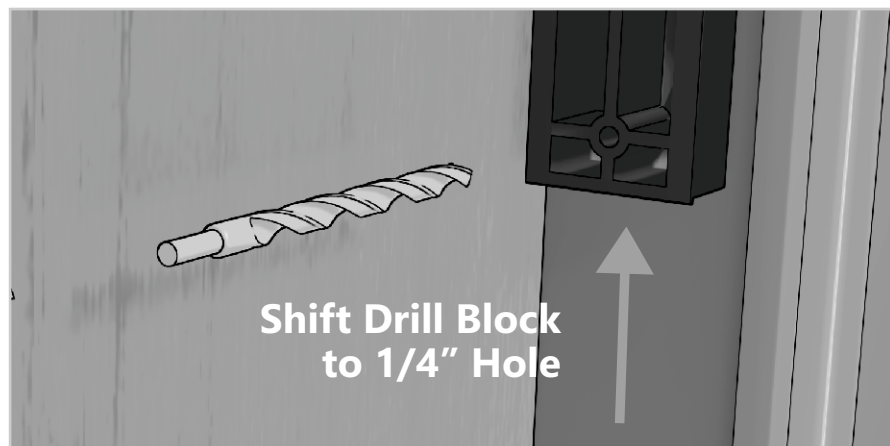
- 1** The use of the Drill Block will be needed to drill the 5/32 inch and the 1/4 inch holes pressed flatly and aligned for exact center into frame, on each side, as it was used earlier on door.



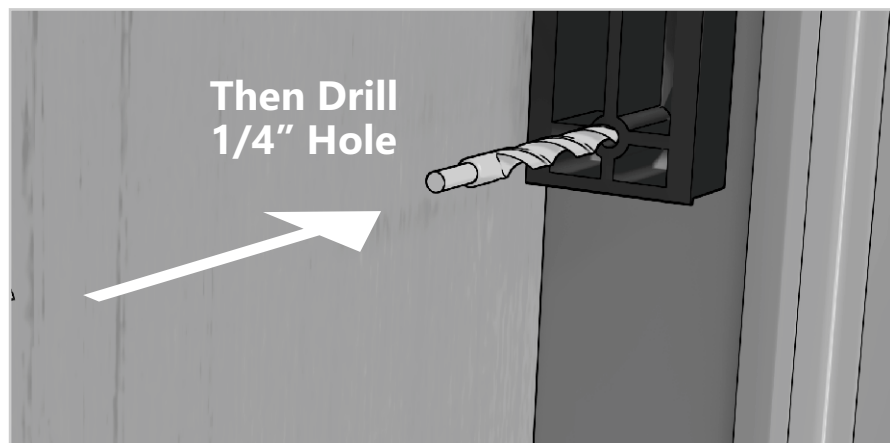
- 2** Attach 5/32 inch drill bit into drill and drill through 5/32 inch hole in drill block. Align 5/32 inch drill bit with punch indent and with drill block flat against door frame, drill 5/32 inch hole into frame. Remove drill bit.



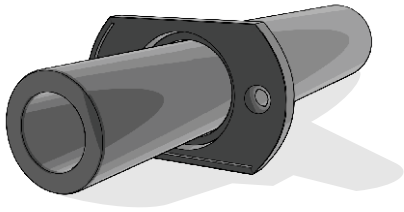
- 3** Attach 1/4 inch drill bit into drill and drill through 1/4 inch hole in drill block.



- 4** Align 1/4 inch drill bit with 5/32 inch hole and with drill block flat against door frame, drill 1/4 inch hole in frame. Remove drill bit



Casing Hanger



- 1 The use of the Casing Hanger Insert and Casing Hanger will be needed to drill the 3/8 inch, and 5/8 inch holes into frame.

- 2 Attach 3/8 inch drill bit into drill and drill through Casing Hanger Insert with it positioned inside Casing Hanger and drill bit end exiting through flat end of Casing Hanger.

- 3 Align 3/8 inch drill bit with 1/4 inch hole, and with flat portion of Casing Hanger flat against door frame, drill the 3/8 inch hole. Remove drill bit.

- 4 Attach a 5/8 inch drill bit into drill and drill through Casing Hanger with end of drill bit exiting through flat end of Casing Hanger.

- 5 Align 5/8 inch drill bit with 3/8 inch hole, and with flat portion of Casing Hanger flat against door frame, drill the 5/8 inch hole. Remove drill bit.

- 6 Attach 3/4 inch drill bit into drill and align with 5/8 inch hole and drill hole into frame.

- 7 Follow the same procedures to drill the opposite holes.

