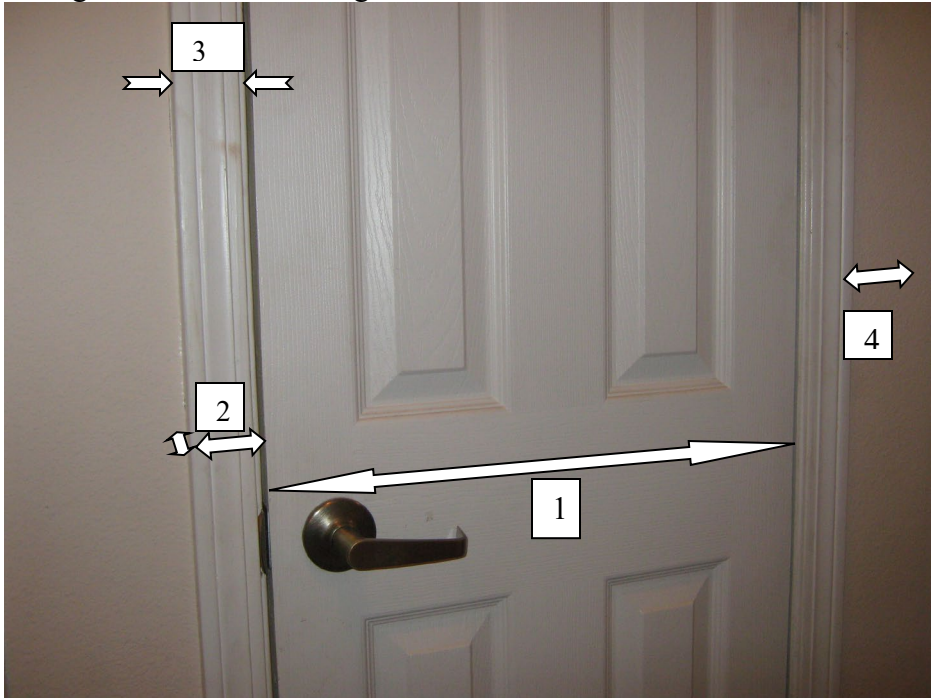


The KATY BAR® HURRICANE DOOR ANCHOR is designed for most residential in-swinging, exterior grade, single and double-doors. The following information describes the ideal doorway dimensions for easy installation.

A single door is used to diagram, but double-doors are measured the same way.



(1) In-swinging door(s) that is 36 inch, 60 inch or 72 inches in width with a continuous flat portion 3 inches above or below the door knob that contains no door molding, or door glass or obstructing hardware.

(2) Door trims are less than 1 inch thick and between 1 ½ inch and 2 ¼ inch in width.

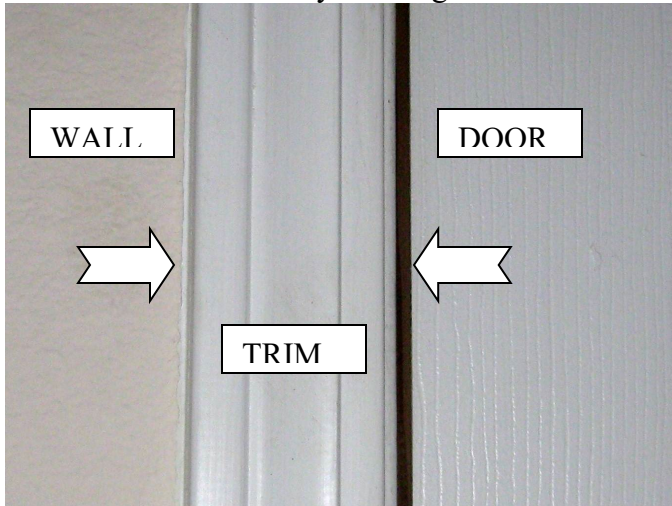
(3) Door and wall are on the same plane with no more than 9/16 inch difference.
*A method to determine this is described below.

(4) At least 2 inches of wall space on either side of door to accommodate drill for installation.

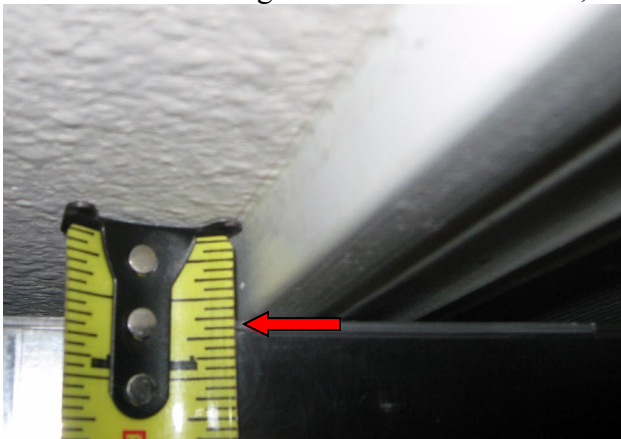
We realize there are many, many different doorway configuration, and measurements may differ from these listed, but may still allow a proper installation. If your doorway has measurements different than these dimensions listed, please contact us on this website with the measurement and we will advise of a solution

EVEN PLANE OF DOOR AND WALL DETERMINATION

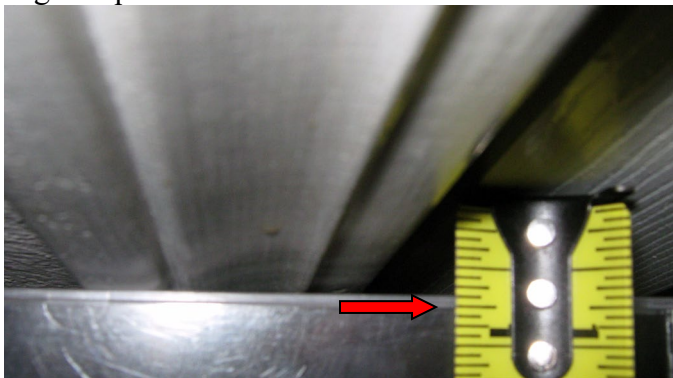
Most residential doorways are aligned so the door and wall are even with each other.



To measure how aligned the door and wall is, follow these steps.



Use a flat straight surface, and place against thickest portion of door trim. Measure thickness of trim nearest the wall from edge of surface to the wall, keeping all angles square and mark distance as shown.



Measure thickness of trim nearest the door from edge of surface and mark as shown. The difference between these two measurements is the difference in the plane, and should not be greater than 9/16 inch.

In general, The Katy Bar® Hurricane measures 2 & 1/2 inches away from door.

The slide bolt extends a measured 1 & 1/2 inches away from door.

The wall anchor measures 2 inches away from wall.

The wall anchor will adjust from 9/16 inch to 1 & 3/4 without spacer.

See Below

The wall anchor will adjust from 1 inch to 2 & 1/8 inch with the spacer. Not shown

