

KATYBAR[®] DOOR VAULT

INDUSTRIAL LOCK SYSTEM

MUST BE DONE FIRST

UNPACKING INSTRUCTIONS

The Handle is locked during shipping.

There are two internal shipping screws to protect rack and pinion during shipping.
These shipping screws must be removed to operate handle to move right and left.

1



Remove all screws right and left on both sides of Katy Bar.

2



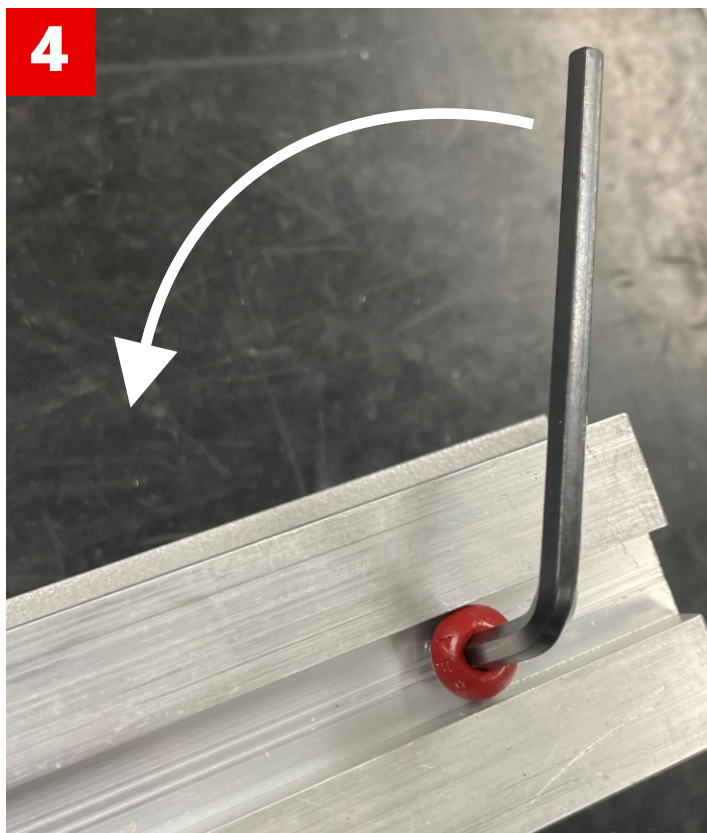
Using screwdriver, pry upward to separate the Katy Bar from the door rail.

3



Locate the two red shipping screws on each end of Katy Bar in bottom rail.

4



Use provided wrench to remove the shipping screws and discard.

The handle should move freely now and bolts should extend evenly and smoothly with control of handle moving right and left.

You are now ready to begin installation on door.

If there is any resistance while moving handle right or left, or if bolts are not moving outward and inward... please **DO NOT continue with installation and contact us.**

KATYBAR® DOOR VAULT

INDUSTRIAL LOCK SYSTEM

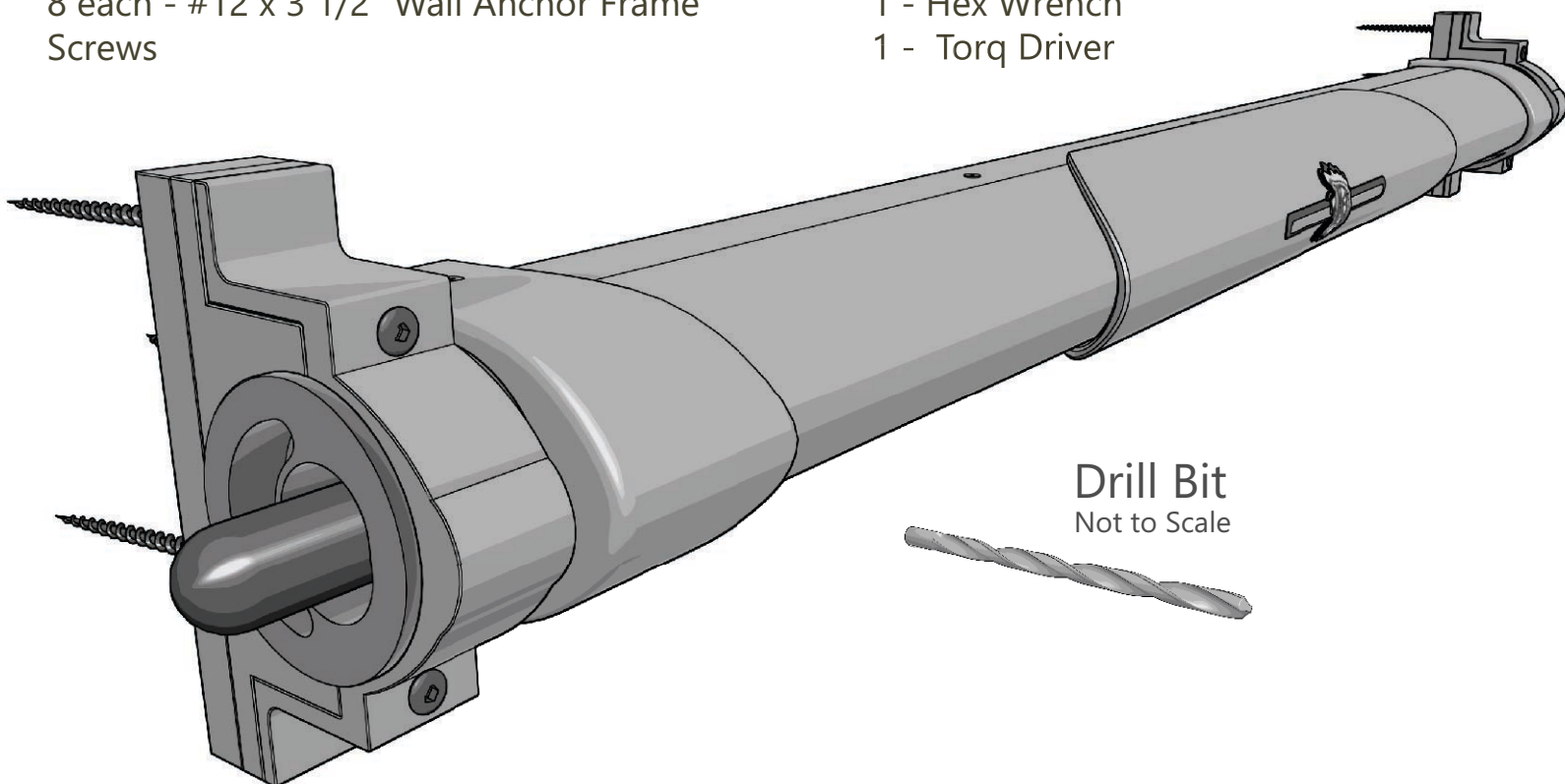
BEFORE INSTALLATION CHECK LIST

- 1 Make sure you have all components in Parts List before installation.
- 2 Make sure your Katy Bar® functions properly by sliding handle to engage lock bolts outward and then slide handle to disengage lock bolts inward before installation. While in locked position, hold up and against door at desired installation area to be certain lock bolts freely clear door trim.
- 3 Make sure your door meets the Door Requirements before installation.
- 4 Make sure that Wall Anchors screws are **NOT OVERTIGHTENED**. If screws are over tightened on wall anchor, you will crush wall board and completely alter alignment of lock bolts to wall anchors. Alignment of Wall Anchors and lock bolts are totally dependent on Wall Anchor mounted snug but without crushing wall board inward.

PARTS LIST

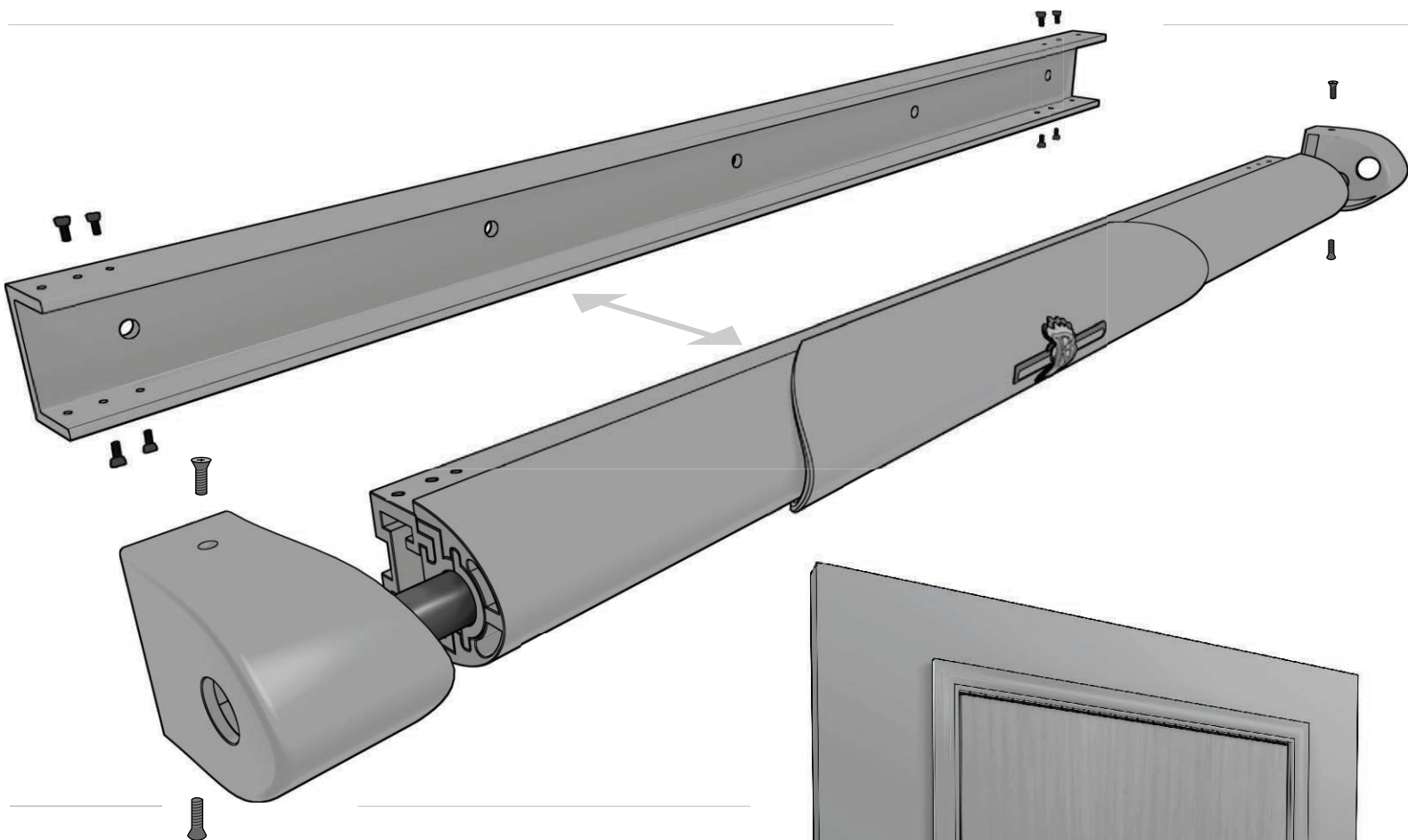
1 - Katy Bar® Door Vault with End Caps
2 each - Wall Anchors, Cams & Spacers
8 each - 1/4" x 20 X 3/4" Attachment Bolts
8 each - #12 x 3 1/2" Wall Anchor Frame
Screws

5 each - #10 x 1 1/4" Door Rail Screws
4 each - 8/32 End Cap Screws
1 - 6" 5/32 Drill Bit
1 - Hex Wrench
1 - Torq Driver



KATYBAR/DOOR PREP

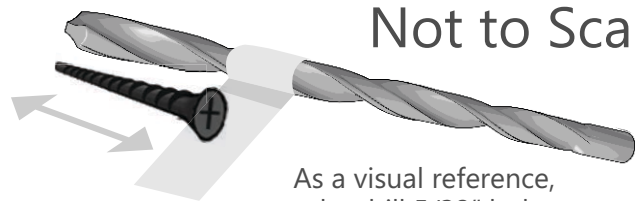
- 1** Remove all screws (12) on Katy Bar® Vault and remove End Caps and set aside.
- 2** Separate Katy Bar® Vault from Door Rail by pulling Katy Bar® up from Door Rail.



- 3** Determine area of door for Katy Bar® Vault location. Area on door should be; below door knob, smooth all the way across, at least two inches down and away from door knob AND hinge, and more than 33 inches from floor.
- 4** Measure width of door and mark the exact center.
- 5** Use a punch to create indent of mark at exact center.



DOOR 1ST HOLE / CENTERING

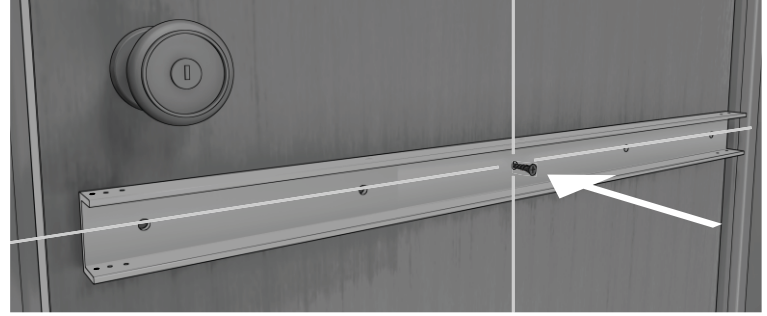


As a visual reference,
tape the drill 5/32" hole no
deeper than your tape mark.

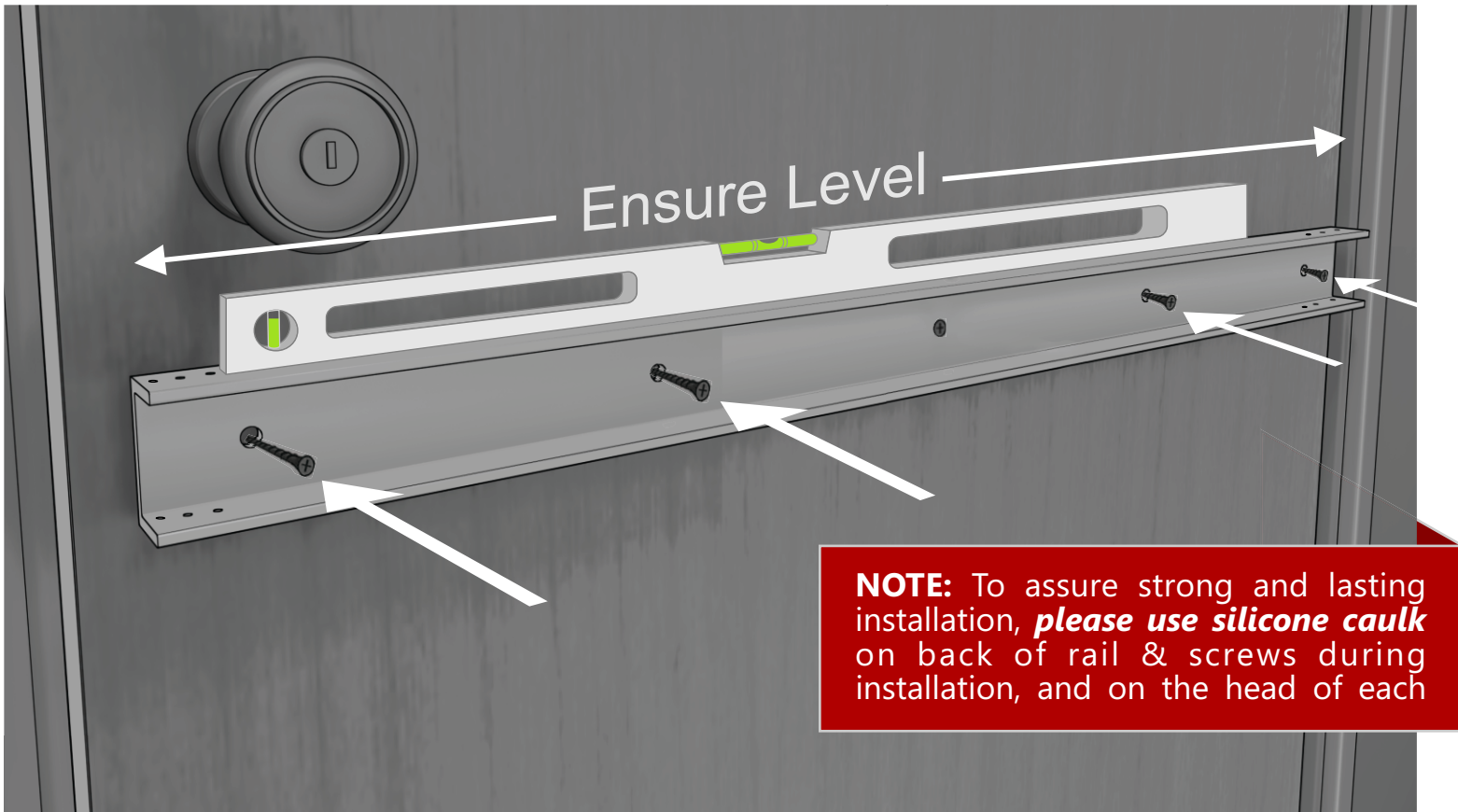
- 1** Measure DOOR RAIL SCREW against provided drill bit and mark with tape to indicate how deep to drill into door.
- 2** Install provided 5/32" drill bit into drill and drill hole no deeper than your tape mark.

RAIL PLACEMENT/LEVELING

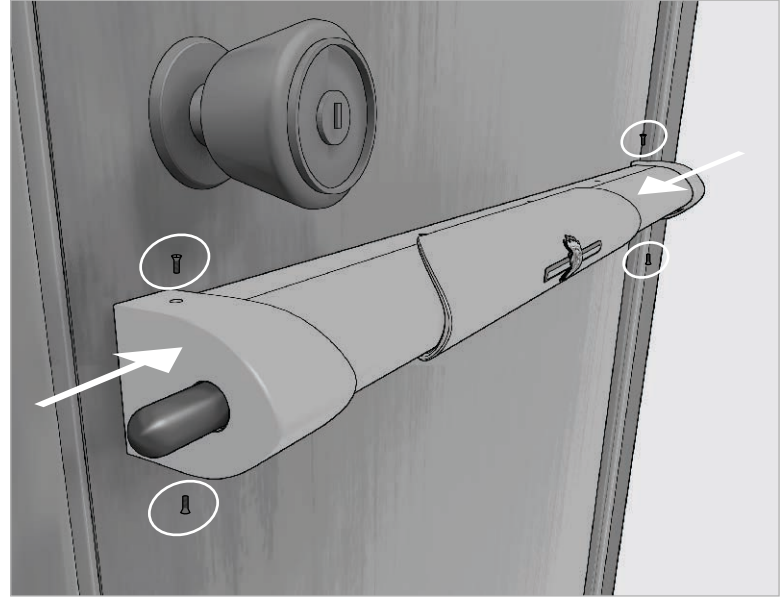
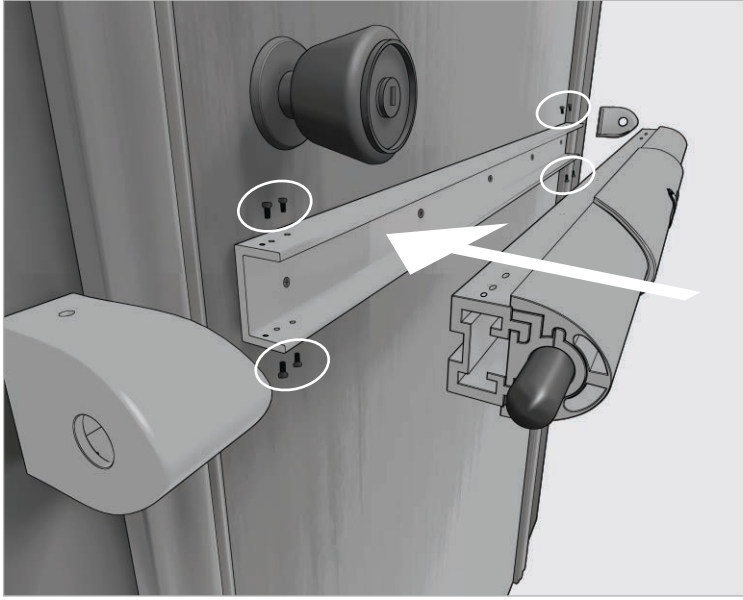
- 1 (Place one #10 1- 1/4 Door Rail Screw through door rail center hole and into pre-drilled center hole in door and snug with screwdriver.
- 2 Mark EACH end of the door rail using a level to insure rail is level along the door width.



- 3 Use punch to indent holes on door. Repeat marking each remaining hole. Starter holes are often all that is needed for many doors. If you need to drill a complete hole, do so with the taped drill bit for each door rail screw.



- 4 **NOTE:** To assure strong and lasting installation, ***please use silicone caulk*** on back of rail & screws during installation, and on the head of each screw. This measure will help the prevention of the screw trying to back out of door.
- 5 Tighten all screws to firmly attach Door Rail to door.

FINAL ASSEMBLY

- 1** Replace Katy Bar® into Door Rail and attach the 8 1/4" x 20 bolts first and tighten with the Hex Wrench
- 2** Replace End Caps and attach all 4 (8/32)screws and tighten.

- 1 Remove screws holding Top Cover of Wall Anchor. Set Top Cover and screws aside. Install provided 5/32" drill bit into drill. Slide handle fully till lock bolts are positioned out over door trim.
- 2 With Wall Anchor Spacer, Base and Cam in hand, position Lock Bolt through Cam and position Wall Anchor Spacer and Base against the edge of trim as shown.
- 3 Turn Cam till Lock Bolt is nearly touching the inner edge of oval in Cam.

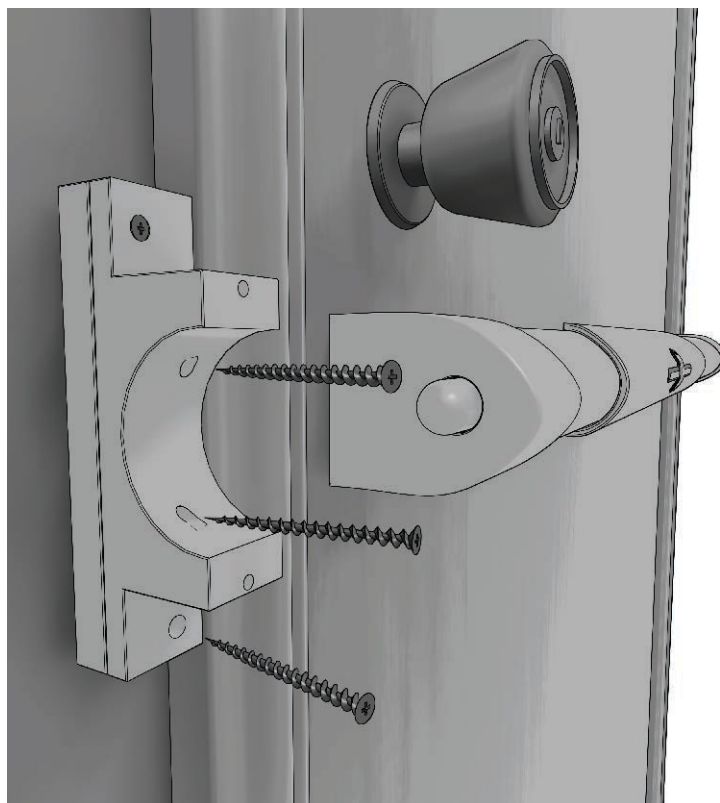
WARNING: DO NOT OVERTIGHTEN WALL ANCHOR FRAMING SCREWS & CRUSH WALLBOARD

- 4 Space in Cam above and below Lock Bolt is equal in distance.
- 5 Make certain and check again; edge of Spacer (if needed) and Base are flat against edge of door trim, Cam is rotated such that Lock Bolt is nearly touching inner edge of oval in Cam, space in Cam above and below Lock Bolt is equal in distance. This is the optimal position for Wall Anchor.
- 6 Hold this alignment in place.



Top Wall Anchor | 1st Drilled Hole

- 1 Place 5/32" Drill Bit in Top Wall Anchor Base Screw Hole.
- 2 Carefully drill pilot hole 4 inches into frame.
- 3 Change 5/32" drill bit for a Torqs head drive.
- 4 Screw one of the #9 - Wall Anchor Framing Screws in most of the way. **TAKE CARE DRILL DOES NOT OVERTIGHTEN SCREW**
- 5 Replace Torqs Drive with 5/32" Drill Bit in Drill.
- 6 Slide Handle on Katy Bar® Vault to disengage Lock Bolt from Wall Anchor and remove Cam to reveal remaining Wall Anchor Screw Holes.
- 7 Hold Wall Anchor Base and Spacer in position against door trim and drill pilot holes for remaining screws.
- 8 With Wall Anchor Framing Screws set most of way, use ratchet wrench and Torqs drive to pull Wall Anchor snugly to wall **without crushing wall board.**



- 1 See #8 (Previous Page) With Wall Anchor Framing Screws set most of way, use ratchet wrench and Phillips drive to pull Wall Anchor snugly to wall without crushing wall board.
- 2 Slide Handle to engage Lock Bolts through Wall Anchor and adjust Cam such that Lock Bolt is freely moving through Cam.
- 3 Attach Wall Anchor Top Cover and screws.
- 4 Screw one of the Wall Anchor Screws into pre-drilled pilot hole and screw till snug...
TAKE CARE NOT TO OVER TIGHTEN SCREW
- 5 Repeat steps for Wall Anchor Installation on other side of door.

